

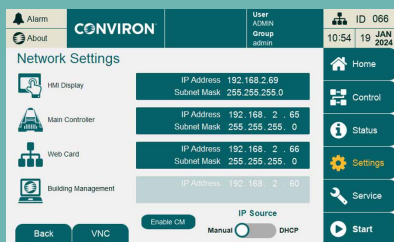
# ConvironDirect Quick Start

## 1 Connect chamber to building network



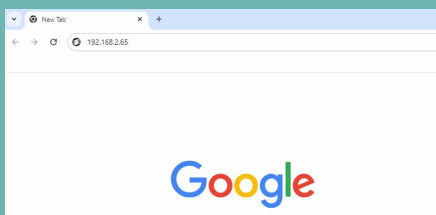
In order to interact with a chamber using ConvironDirect, the chamber must be connected to the building network. The chamber can connect to a building network seamlessly using CAT5e or CAT6e Ethernet cable.

## 2 Assign network address to the chamber



The chamber must be on the same network as the workstation used to access ConvironDirect. Using the chamber display, assign a suitable network address to the chamber. The network address used for ConvironDirect will be the Main Controller address. To access the chamber network settings, navigate to **Settings** → **Network**.

## 3 Connect to the chamber using a web browser



ConvironDirect can be accessed using a web browser. While all browsers are compatible, Conviron recommends using Chrome. In the address field of the web browser type in the IP address of the Main Controller.

## 4 Contact Conviron for an activation license



ConvironDirect requires an activation license before it can be used. A license can be obtained by calling Conviron, scanning the QR code, or sending an email to [convironservice@conviron.com](mailto:convironservice@conviron.com)

## 5 Enjoy using ConvironDirect



ConvironDirect is now activated and can be enjoyed from the comfort of a desktop, tablet, or any other device connected to the same network.

If further assistance is required, please contact us at +1.800.363.6451 or +1.204.786.6451